

Directions to Trout Pond Recreation Area:

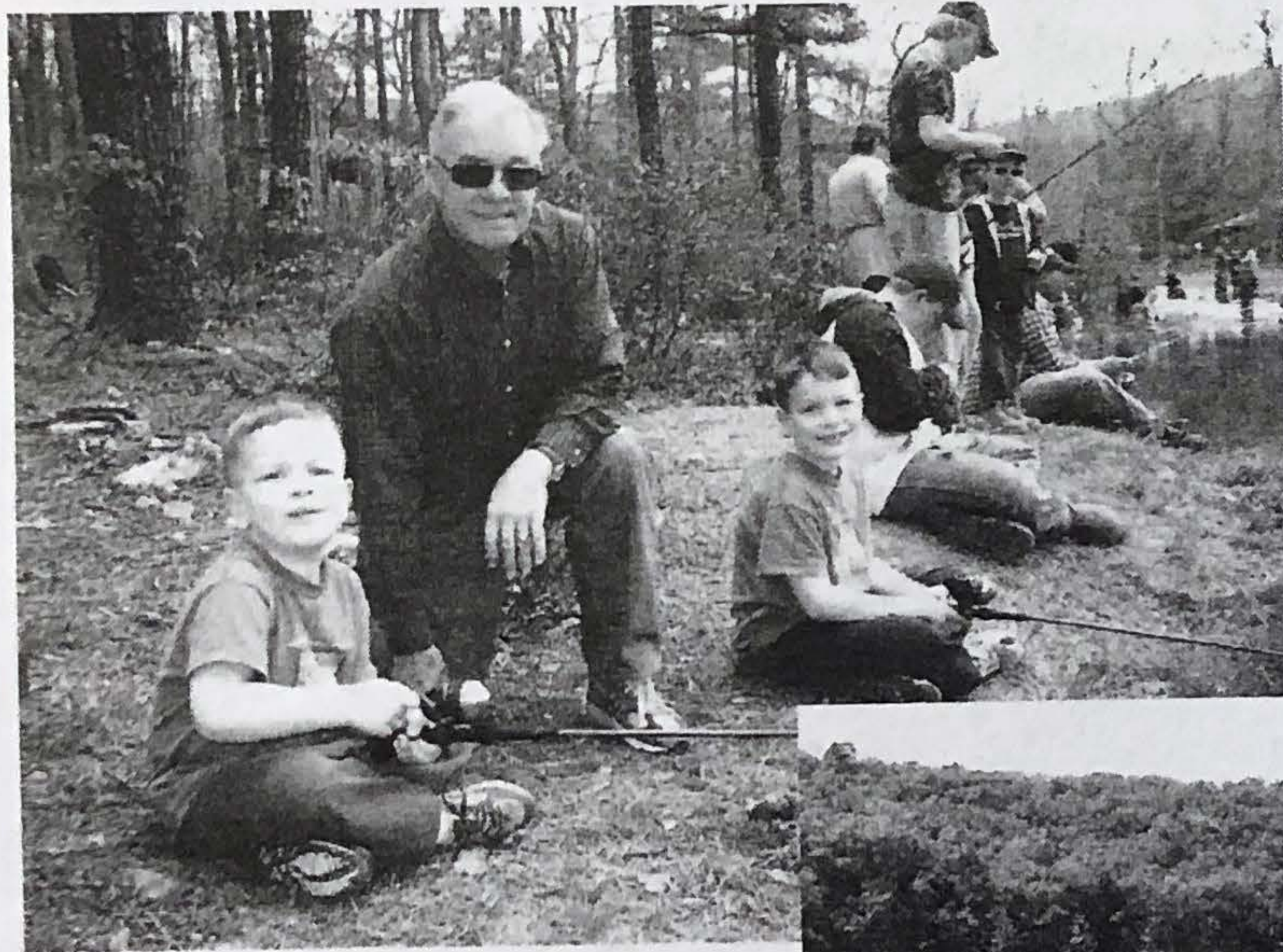
From Strasburg, Virginia, follow State Route 55 west for 18 miles to Wardensville, West Virginia. Turn left on SR 23/10 and travel for about 6 miles. Turn right on SR 259/5 and travel 6 miles to Forest Service Road 500. Turn right and travel about 1 mile to the Trout Pond Recreation Area entrance.

From Broadway, Virginia, follow State Route 259 past Lost City, West Virginia. Turn right on SR 259 and travel 6 miles to Forest Service Road 500. Turn right and travel about 1 mile to the Trout Pond Recreation Area entrance.

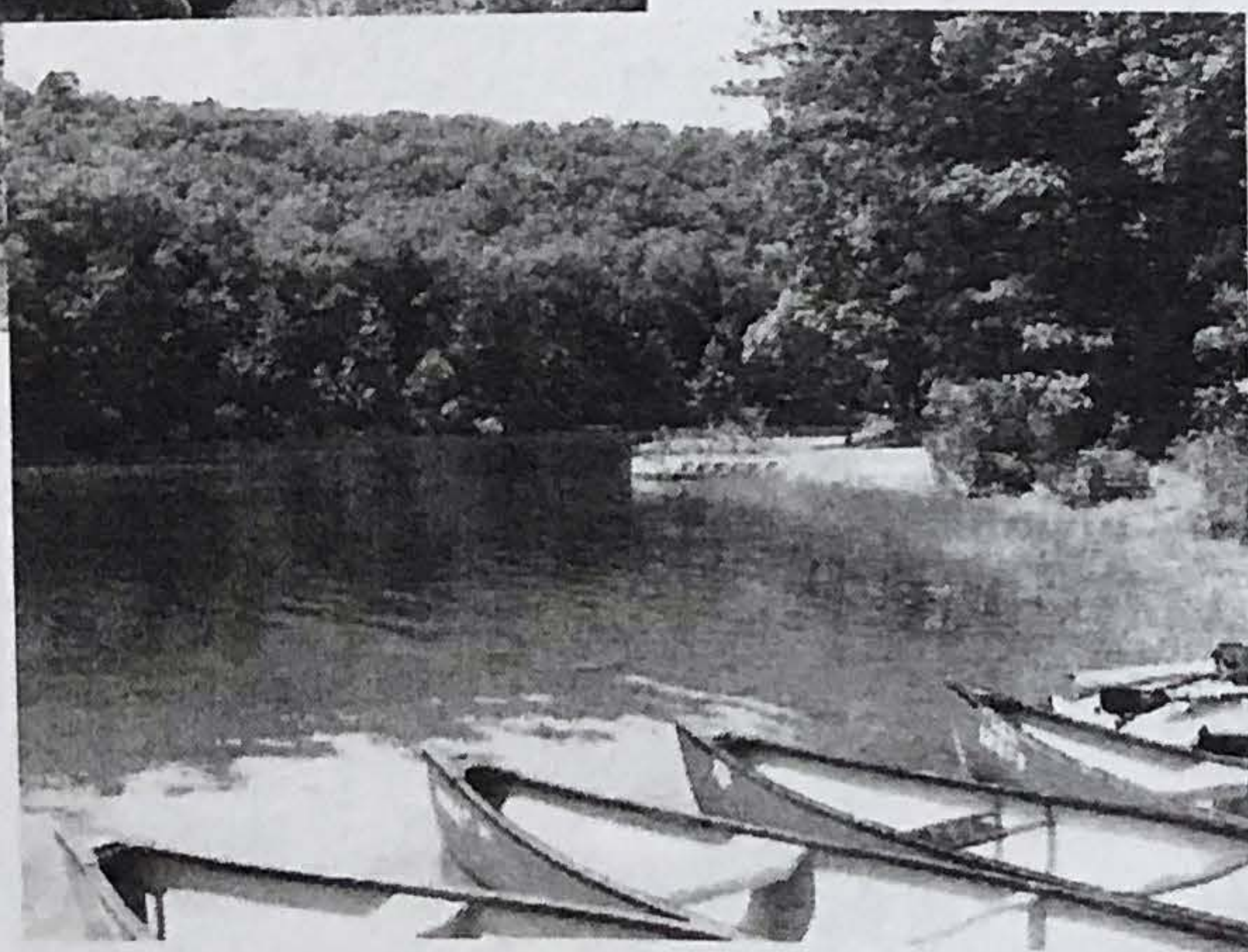
For more information:

Lee Ranger District
540-984-4101.

www.fs.usda.gov/gwj/



Kids enjoying Trout Pond's annual fishing derby



Canoes in Rockcliff Lake



Forest Service
U.S. DEPARTMENT OF AGRICULTURE

Camping and Hiking Guide to Trout Pond Recreation Area



Trout Pond, named for the only natural lake in West Virginia, is a unique area of lakes, streams, mountains and sinkholes surrounded by the beautiful hills of West Virginia.

George Washington & Jefferson NFs
Lee Ranger District